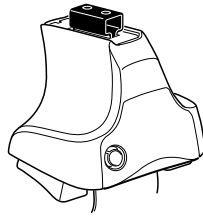
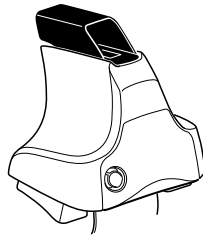
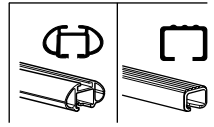


# Kit 1625

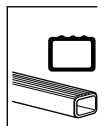
AUDI A7, 5-dr Hatchback, 10-



754 Rapid System  
480R Rapid Traverse (North America)

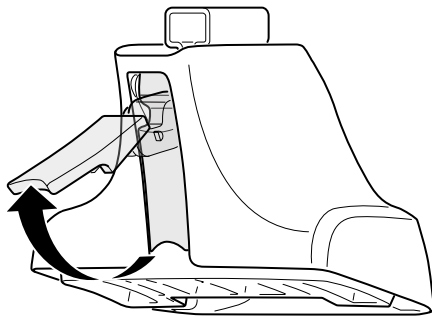


480 Traverse (North America)





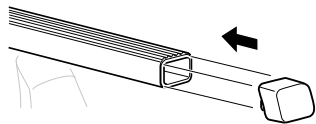
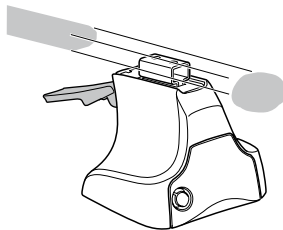
1



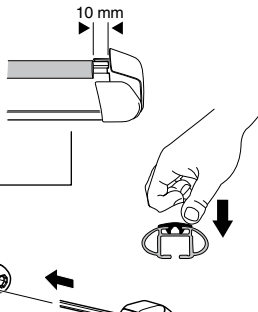
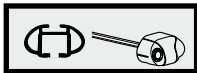
2



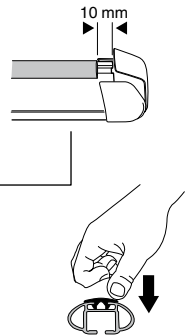
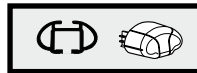
754 Rapid System  
480R Rapid Traverse  
(North America)



x4



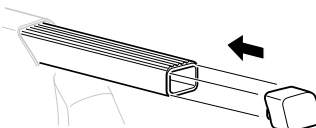
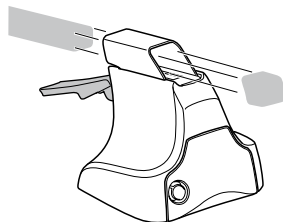
x4



x4

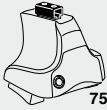


480 Traverse  
(North America)

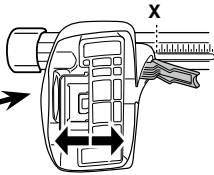


x4

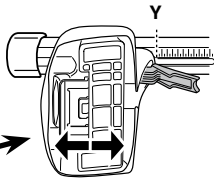
**3**



**754** Rapid System



	<b>X</b>
<b>AUDI A7, 5-dr Hatchback, 10-</b>	<b>43</b>



	<b>Y</b>
<b>AUDI A7, 5-dr Hatchback, 10-</b>	<b>39,5</b>

**3**



**480R** Rapid Traverse



**480** Traverse



**(North America)**

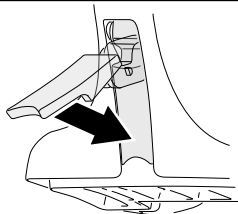


	<b>X inch</b>	<b>X mm</b>
<b>AUDI A7, 5-dr Hatchback, 10-</b>	<b>42 1/2"</b>	<b>1081 mm</b>



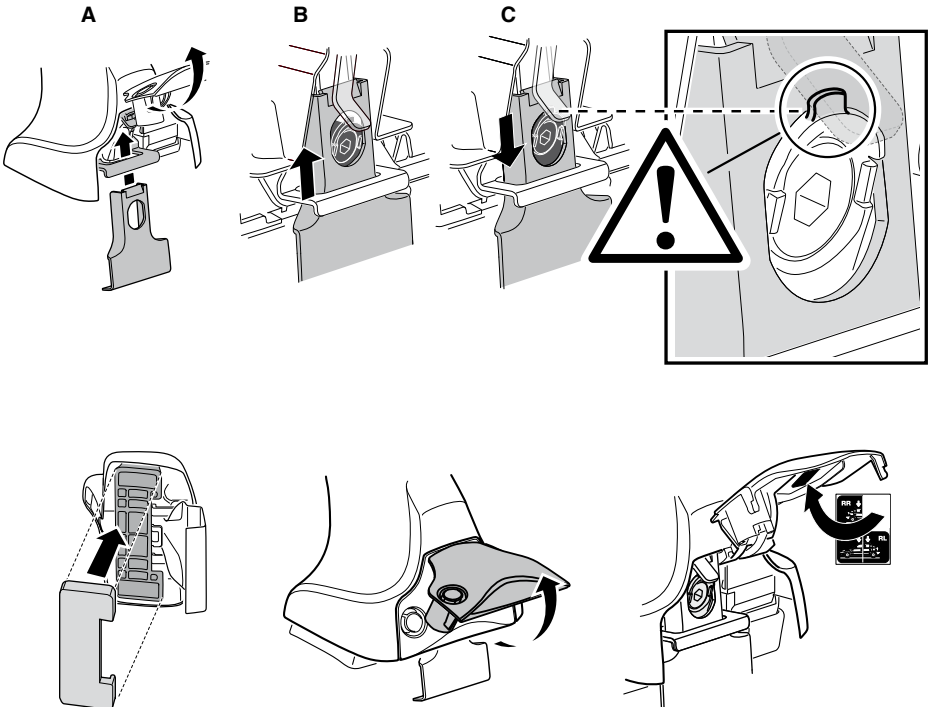
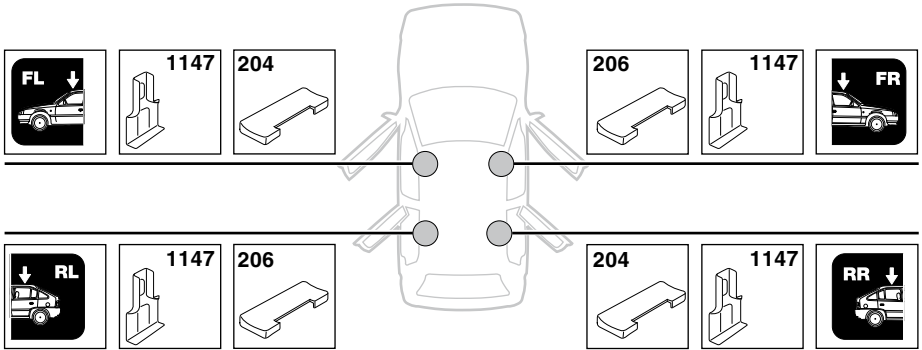
	<b>Y inch</b>	<b>Y mm</b>
<b>AUDI A7, 5-dr Hatchback, 10-</b>	<b>41 1/8"</b>	<b>1046 mm</b>

**4**

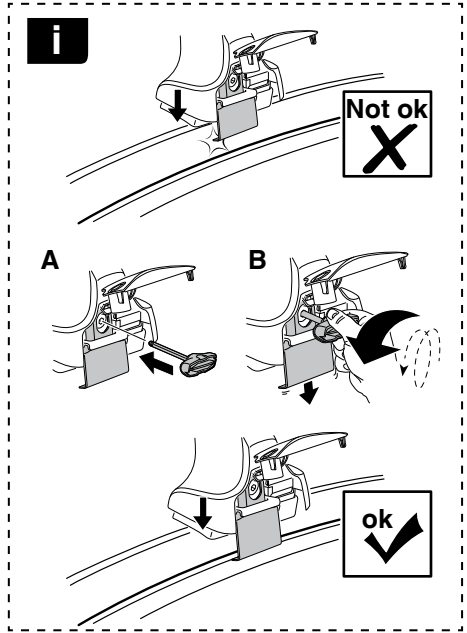
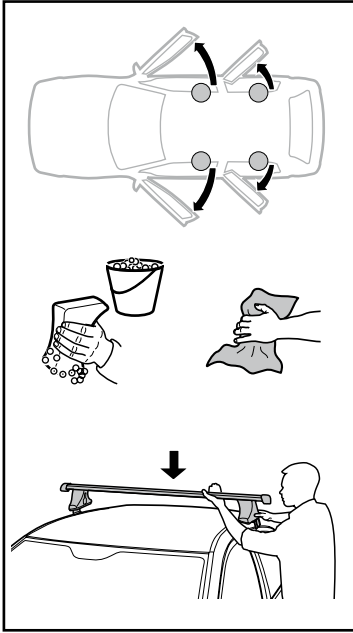


5

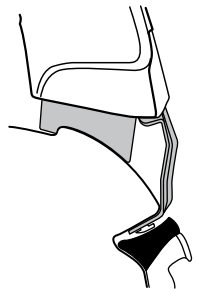
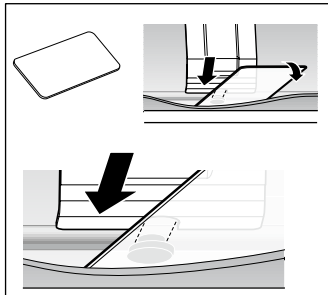
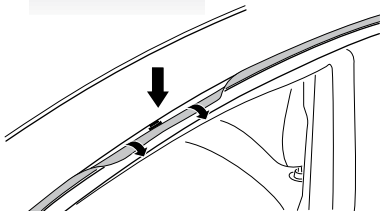
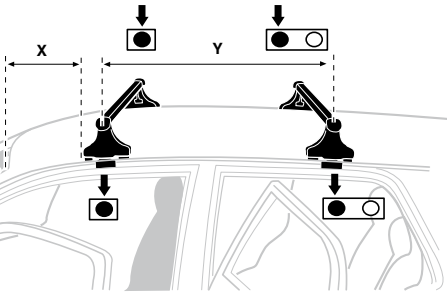
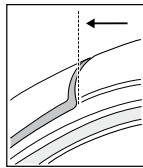
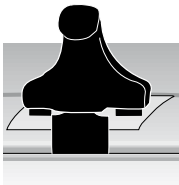
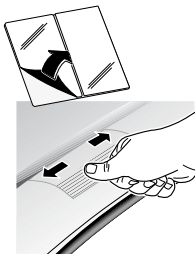
AUDI A7, 5-dr Hatchback, 10-



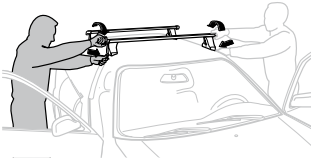
6



	X mm	Y mm	X inch	Y inch
AUDI A7, 5-dr Hatchback, 10-	180 mm	712 mm	7 1/8"	28"



7



<b>GB/US</b>	Tighten alternately
<b>D</b>	Die Schrauben abwechselnd anziehen
<b>F</b>	Serrer alternativement chaque côté
<b>NL</b>	Afwisselend aan de linker- en de rechterkant aandraaien
<b>I</b>	Alternare il serraggio delle viti
<b>E</b>	Apertar alternativamente
<b>PT</b>	Aperte alternadamente
<b>S</b>	Dra åt växelvis
<b>FIN</b>	Kierrä vuorotellen
<b>EST</b>	Pinguldage vaheldumisi
<b>LAT</b>	Pielveiciet pamišus
<b>LIT</b>	Užsukinėkite pakaitomis
<b>PL</b>	Śruby dokręcaj naprzemiennie
<b>RU</b>	Загряивайте попеременно

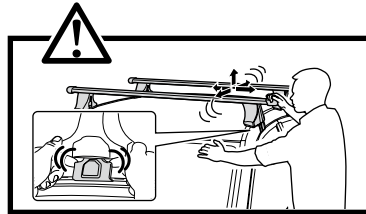
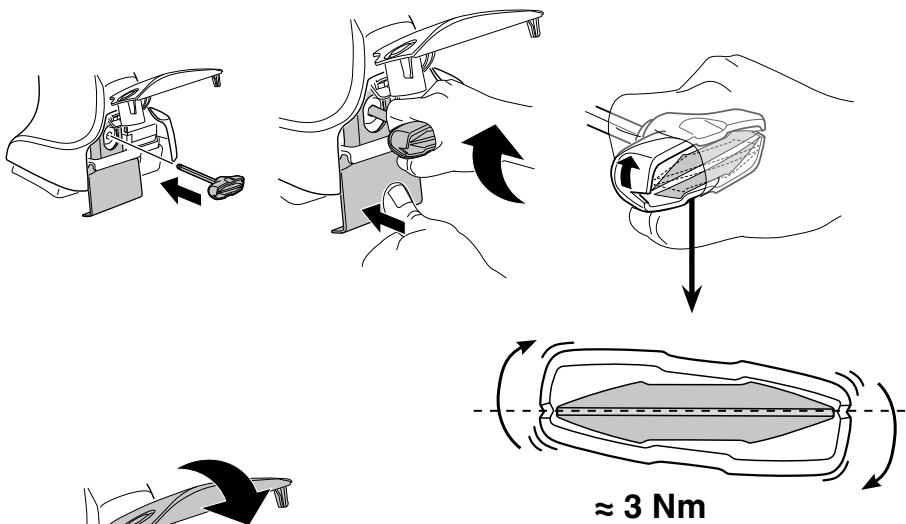
<b>CZ</b>	Pokręřta bagažníka dokręřcaj dokręřcaj naprzemiennie.
<b>SK</b>	Dofahajte striedavo
<b>SLO</b>	Privijajte izmenično.
<b>HR</b>	Naizmjenočno zategnite
<b>HU</b>	Egymástól függetlenül szorítandó
<b>GR</b>	Σφιγίγτες εναλλάξ
<b>TR</b>	Dönüşümlü sıkın

**中文** 交替拧紧

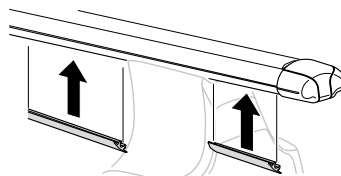
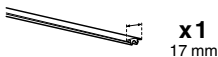
**한국어** 번갈아 가며 조이십시오.

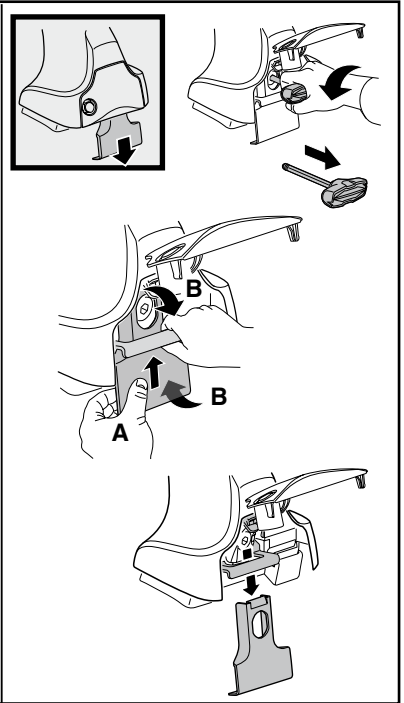
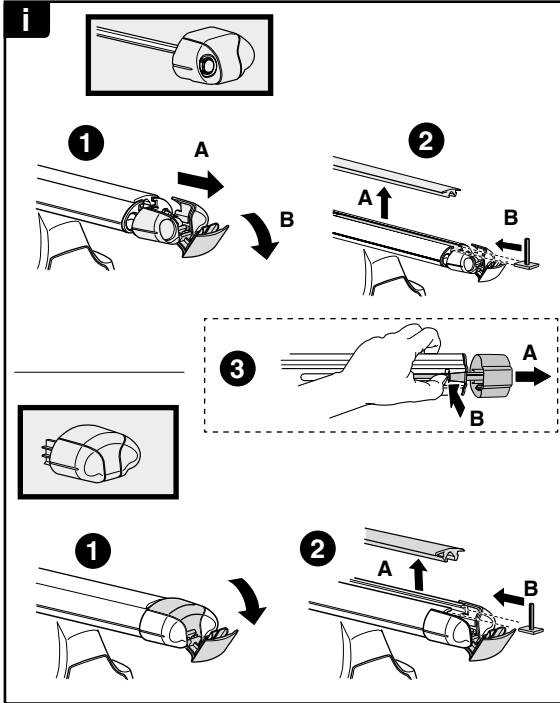
**日本語** 交互に締め付けてください。

**ไทย** ชันในแบบสลับ

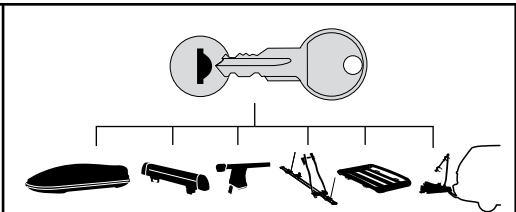


8





**THULE**  
SWEDEN  
**ONE  
KEY  
SYSTEM**



- 544** (x4)
  - 596** (x6)
  - 588** (x8)
  - 510** (x10)
  - 452** (x12)
- NA  
EUR  
ASIA



WW ▶ Thule Sweden AB, Box 69, 330 33 Hillerstorp, SWEDEN  
NA ▶ Thule Inc., 42 Silvermine Road, Seymour, Connecticut 06483, USA

info@thule.com  
customer.service@thule.com

www.thule.com